



THE LAND ROVER COLLECTION



ABOVE & BEYOND



CONTENTS

THE LIFESTYLE COLLECTION	05
MEN'S APPAREL	08
WOMEN'S APPAREL	16
GIFTS AND LIFESTYLE	20
LUGGAGE	26
THE ABOVE AND BEYOND COLLECTION	32
MEN'S AND WOMEN'S APPAREL	36
DOG RANGE	50
ACCESSORIES	54

EQUIP YOURSELF FOR THE ALL-TERRAIN LIFESTYLE. WITH ACCESSORIES AND APPAREL THAT TAKE LAND ROVER DESIGN INTO NEW TERRITORY. FEATURING EVERYTHING FROM CLASSIC CHRONOGRAPHS TO COLLECTORS' EDITION SCALE MODELS, IT'S A RANGE THAT'S RUGGED AND STYLISH. INSPIRED BY THE LAND ROVER SPIRIT OF ADVENTURE. AND BUILT TO GO THE DISTANCE.



ABOVE & BEYOND



THE LIFESTYLE COLLECTION



ABOVE & BEYOND

A man with a beard and short dark hair is wearing a blue high-necked jacket. He is standing outdoors, positioned between a large, layered rock formation on the left and a smooth, light-colored concrete pillar on the right. The background shows a blurred landscape with hills and a fence. The overall tone is rugged and adventurous.

THE LIFESTYLE COLLECTION

LIVE ALL TERRAIN

Whether you're escaping the city or exploring it, the Land Rover collection is at home in every terrain. Distinctive and well crafted, it's a range of apparel and accessories designed for life, wherever it's lived.

MEN'S APPAREL

The all-terrain spirit of Land Rover continues in our menswear collection. Instilled with the same unrivalled versatility, it's ready for anywhere.

MEN'S HOODED RAIN JACKET

Take shelter seriously with this water-resistant jacket. Lined with breathable mesh, it features an adjustable hood and Land Rover perforation detailing and chamfering throughout. Finished with taped seams and Durable Water Repellent (DWR®) coating.

Navy - ₹ 12 880

XS	51LGJM452NVB	XL	51LGJM452NVF
S	51LGJM452NVC	XXL	51LGJM452NVG
M	51LGJM452NVD	XXXL	51LGJM452NVH
L	51LGJM452NVE	XXXXL	51LGJM452NV3

MEN'S APPAREL



**MEN'S MODERN DRIVER'S JACKET**

Be ready for every kind of road. This contemporary driver's jacket offers incredible versatility. Features quilted shoulders, branded poppers to the cuffs and a brushed-metal effect wordmark tag. Water-resistant zips and DWR® coating.

Black - ₹ 10 640

XS	51LGJM450BKB	XL	51LGJM450BKF
S	51LGJM450BKC	XXL	51LGJM450BKG
M	51LGJM450BKD	XXXL	51LGJM450BKH
L	51LGJM450BKE	XXXXL	51LGJM450BK3



MEN'S ZIP UP SOFTSHELL JACKET

Softshell made from a nylon elastane mix for ultimate protection and mobility. Features laser-cut Land Rover perforation detailing, and chamfering. With storm cuffs, a concealed hood and microfibre lined pockets for added warmth.

Navy - ₹ 10 879

XS	51LGJM451NVB	XL	51LGJM451NVF
S	51LGJM451NVC	XXL	51LGJM451NVG
M	51LGJM451NVD	XXXL	51LGJM451NVH
L	51LGJM451NVE	XXXXL	51LGJM451NV3



MEN'S CLASSIC SHIRT

Smart button-down collar shirt made from an easi-care cotton mix. Features welt pocket with pen section and tonal Land Rover wordmark. Contrast detailing to the buttons, placket, inner lining and cuffs.

Grey - ₹ 5 600

XS	51LGSM453GYB	XL	51LGSM453GYF
S	51LGSM453GYC	XXL	51LGSM453GYG
M	51LGSM453GYD	XXXL	51LGSM453GYH
L	51LGSM453GYE	XXXXL	51LGSM453GY3

MEN'S APPAREL



OVAL BADGE MESH BACK CAP

Comfortable and breathable cap with oval badge to the front. Features contrast piping and eyelets, Land Rover wordmark tape to the interior, rear mesh panels and an adjustable snapback.

Green - 51LGCH489GNA
₹ 2 950



WORDMARK CAP

Two-tone cap with Land Rover wordmark. Features contrast peak and eyelets, wordmark tape to the interior and a branded metal adjuster.

Navy - 51LGCH455NVA
₹ 2 360



MEN'S ACCENT COLLAR POLO SHIRT

100% cotton piqué polo shirt with contrast tipping to the collar and cuffs. Features Land Rover wordmark to the chest, concealed buttons, and a side tab with Land Rover perforation detailing.

Grey - ₹ 3 920

XS	51LGPM456GYB	XL	51LGPM456GYF
S	51LGPM456GYC	XXL	51LGPM456GYG
M	51LGPM456GYD	XXXL	51LGPM456GYH
L	51LGPM456GYE	XXXXL	51LGPM456GY3



MEN'S ACCENT COLLAR POLO SHIRT

100% cotton piqué polo shirt with contrast tipping to the collar and cuffs. Features Land Rover wordmark to the chest, concealed buttons, and a side tab with Land Rover perforation detailing.

Navy - ₹ 3 920

XS	51LGPM456NVB	XL	51LGPM456NVF
S	51LGPM456NVC	XXL	51LGPM456NVG
M	51LGPM456NVD	XXXL	51LGPM456NVH
L	51LGPM456NVE	XXXXL	51LGPM456NV3



MEN'S RELIEF MAP T-SHIRT

A cotton jersey crew neck T-shirt with high build topography graphic. Features Land Rover wordmark, twin-needle stitching to the hem and sleeves and a side tab with Land Rover perforation detailing.

Grey - ₹ 3 199

XS	51LGTM457GYB	XL	51LGTM457GYF
S	51LGTM457GYC	XXL	51LGTM457GYG
M	51LGTM457GYD	XXXL	51LGTM457GYH
L	51LGTM457GYE	XXXXL	51LGTM457GY3



MEN'S RELIEF MAP T-SHIRT

A cotton jersey crew neck T-shirt with high build topography graphic. Features Land Rover wordmark, twin-needle stitching to the hem and sleeves and a side tab with Land Rover perforation detailing.

Navy - ₹ 2 800

XS	51LGTM457NVB	XL	51LGTM457NVF
S	51LGTM457NVC	XXL	51LGTM457NVG
M	51LGTM457NVD	XXXL	51LGTM457NVH
L	51LGTM457NVE	XXXXL	51LGTM457NV3

WOMEN'S APPAREL

Always effortlessly stylish. Now enhanced with smart thermal technology. This collection of womenswear breaks new ground, wherever you wear it.

WOMEN'S QUILTED GILET

A tapered fit gilet designed to retain your body heat. Features thermal insulation, heat-welded panels and side pockets. With geometric graphic detail to the inner lining and upper back, silicone sports zip-pulls and printed Land Rover wordmark to the chest. Water-resistant with DWR® coating.

Navy - ₹ 11 520

8 51LGJW487NVI	16 51LGJW487NVM
10 51LGJW487NVJ	18 51LGJW487NVN
12 51LGJW487NVK	20 51LGJW487NV2
14 51LGJW487NVL	



WOMEN'S QUILTED JACKET

Combat the cold with this all-weather quilted jacket in a tapered fit. Features thermal insulation, heat-welded panels, high neck and side pockets. With geometric graphic detail to the inner lining and upper back, sports zip-pulls and Land Rover wordmark to sleeve. Water-resistant with DWR® coating.

Navy - ₹ 16 001

8	51LGJW486NVI	16	51LGJW486NVM
10	51LGJW486NVJ	18	51LGJW486NVN
12	51LGJW486NVK	20	51LGJW486NV2
14	51LGJW486NVL		



WOMEN'S APPAREL



WOMEN'S WORDMARK T-SHIRT

A cotton elastane jersey T-shirt in our new tapered fit. Features subtle Land Rover wordmark to the chest, twin-needle stitching, and a side tab with Land Rover perforation detailing.

Navy - ₹ 3 199

8	51LGTW484NVI	16	51LGTW484NVM
10	51LGTW484NVJ	18	51LGTW484NVN
12	51LGTW484NVK	20	51LGTW484NV2
14	51LGTW484NVL		



NECK WARMER

Ward off winter with this multifunctional unisex Neck Warmer. Made from performance poly-elastane, with topography graphic and Land Rover wordmark to the front.

Navy - 51LGSF459NVA

₹ 1 920



GIFTS & LIFESTYLE

From high-performance pens to classic collectibles, gift beyond the ordinary with our exclusive range of Land Rover lifestyle accessories.

1. LANYARD

A smart Lanyard with contrast grey leather trim and lobster clasp. Features geometric graphic detail to one side and Land Rover wordmark to the other.

Navy - 51LGGF470NVA
₹ 641

2. PERFORATED LEATHER LOOP KEYRING

A hard-wearing loop keyring made from fine leather. Features debossed Land Rover wordmark and perforation detailing, with bamboo colour stitching.

Navy - 51LGKR468NVA
Ivory - 51LGKR468IVA
₹ 1 770

3. NYLON WALLET

Textured wallet with Land Rover wordmark and chamfering stitch detail. Features contrast grey interior with space for three cards and a coin pocket.

Navy - 51LGGF465NVA
₹ 4 130

4. MATTE CERAMIC TRAVEL MUG

This double-walled ceramic travel mug features the Land Rover wordmark and silicone band around the middle.

Navy - 51LGMG491NVA
₹ 1 770

5. MATTE STONEWARE MUG

Branded stoneware mug with a robust construction and a matte Navy finish. Features Land Rover wordmark and geometric graphic detail.

Navy - 51LGMG474NVA
₹ 1 344

6. WATER BOTTLE / STAINLESS STEEL TRAVEL FLASK

Food grade travel flask with easy-grip surface. Features Land Rover wordmark and geometric graphic detail.

Navy - 51LGGF460NVA
₹ 2 950



**POCKET UMBRELLA**

A Navy pocket-sized umbrella featuring the Land Rover wordmark.

Navy - 51LEUM282NVA

₹ 2 800

**PREMIUM GOLF UMBRELLA**

Non-conductive fibreglass frame golf umbrella. Features vented canopy for additional wind resistance and Land Rover wordmark to the canopy edge.

Navy - 51LEUM123NVA

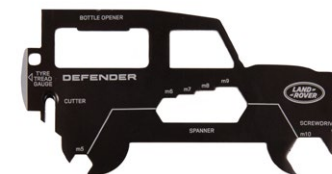
₹ 3,920

**LEATHER WRAPPED iPhone CABLE**

USB cable for iPhone with leather casing in Navy. Includes 3-in-1 cable with micro, lightning and type C connectors. With Land Rover wordmark and oval badge on the connectors. MFI certified.

Navy - 51LGPH495NVA

₹ 2 950

**DEFENDER MULTI TOOL**

Black steel credit card sized multi tool crafted into a Defender silhouette. Features a range of practical tools including tyre tread gauge.

Black - 51LDTT619NVA

₹ 1 416

**TRAVEL MUG STAINLESS STEEL**

This stainless steel travel mug features an easy to grip silicone band around the middle and Terrain Response® branding.

Navy - 51LGMG915NVA

₹ 1 680



RELIEF MAP TOTE BAG

Reusable canvas tote bag with topography graphic in contrast navy. Features Land Rover wordmark to the front.

Ecru - 51LGLU461WTA

₹ 590



NOTE BOOK LARGE A5

A notebook to travel with. Featuring Land Rover wordmark and perforation detailing to the front cover. With matching elastic strap and bookmark ribbon.

Navy - 51LGNB517NVA

₹ 1 344

CARAN D'ACHE FOR LAND ROVER BALLPOINT PEN

Embodying the true spirit of Land Rover, these durable writing instruments have been designed in collaboration with renowned Swiss stationer, Caran d'Ache. Made from anodised aluminium and finished in a choice of three Land Rover colours, these are pens that never fail to impress.

Orange - 51LFPN369ORA

Black - 51LFPN369BKA

Gunmetal - 51LFPN369GUA

₹ 3 920



LAND ROVER SOLAR WATCH

A new generation solar-powered chronograph with 3 auxiliary sub-dials. Fitted with high-resistance mineral glass and a rubber strap for active use. Features power reserve indicator, orange detailing and Land Rover wordmark. Supplied in Land Rover presentation box.

Black - 51LHWM976BKA

₹ 35 201

• •
• •
• •
• •
• •
• •
• •
• •
• •
• •

LUGGAGE

Our state-of-the-art luggage is made for exploring new lands and new opportunities. When the adventure never ends, it's the place to start.



NYLON HOLDALL

Whatever you're packing for, you'll be well prepared with this Nylon Holdall. This versatile bag with padded shoulder strap, internal pockets and compartments, features Land Rover chamfering and wordmark branding to the front panel and is finished with bamboo colour trim and zip-pulls.

Navy - 51LGLU462NVA
₹ 10 620



NYLON BRIEFCASE

All-purpose briefcase with 16" protective laptop sleeve. Features quilted panelling on both sides, bamboo colour trim and Land Rover chamfering, with wordmark to the front panel and padded shoulder strap.

Navy - 51LGLU464NVA
₹ 9 440

NYLON RUCKSACK

Versatile rucksack with internal organiser and 16" protective laptop sleeve. Features quilted panelling on both sides, bamboo colour trim and zip-pulls, with Land Rover chamfering and wordmark to the front.

Navy - 51LGLU463NVA
₹ 8 260

LUGGAGE





LAND ROVER BUSINESS HARD CASE

Taking design cues from our Land Rover skid plate, this business case in Graphite Grey is ready for whatever the workday brings. A polycarbonate shell, an aluminium frame and TSA-approved locks mean important documents are always kept secure. An insert badge to the front and a woven wordmark to the inner lining add style, while more practical touches include several internal compartments and an extendable handle.

Business - 51LELU261GYA
W 45cm H 35cm D 20cm
Graphite Grey - ₹ 20 650

LAND ROVER HARD CASE SUITCASES

Taking design cues from our Land Rover skid plate, these hard cases in Graphite Grey are as resilient and adventure-ready as our vehicles. A polycarbonate shell, aluminium frame and TSA-approved locks mean you'll always travel securely. An insert badge to the front and a woven wordmark to the inner lining add style, while practical touches include several internal compartments and multidirectional tour wheels.

Small - 51LELU262GYA
W 35cm H 55cm D 23cm
Graphite Grey - ₹ 26 550

Large - 51LELU264GYA
W 50.6cm H 73cm D 34cm
Graphite Grey - ₹ 38 400

Medium - 51LELU263GYA
W 46.5cm H 68cm D 26cm
Graphite Grey - ₹ 32 450

CLOTHING SIZE GUIDE

UK MEN'S	CHEST (CM)
XS	88
S	92
M	97
L	102
XL	107
XXL	112
XXXL	117
XXXXL	122

UK WOMEN'S	BUST (CM)
8	77
10	82
12	87
14	92
16	97
18	102
20	107

Product availability and pricing are subject to change. All copy and images remain the copyright of Jaguar Land Rover. Correct at time of publication; subject to availability and market; Jaguar Land Rover reserve the right to remove or change specification of items in the range at any time.





THE ABOVE AND BEYOND COLLECTION



ABOVE & BEYOND



DESIGNED TO ENDURE

The new Land Rover Defender goes above and beyond. And now there's a collection to match. A collaboration between Land Rover and Musto that's rugged and innovative, it's designed to take you anywhere and take on anything. Made from strong and resilient materials. Crafted with technical precision. And tested in real-world conditions. It's what endurance is made of.



RODINIA HYBRID JACKET

SHIELDS

Showerproof and versatile, this softshell jacket is a defence against the elements. Designed with quick burst zip technology that allows you to remove the sleeves in a single movement, turning it from jacket to gilet in seconds. Featuring fast-drying Durable Water Repellent (DWR®) treated fabric and PrimaLoft® eco-insulation for compressible warmth.

MEN'S RODINIA HYBRID JACKET

Black - ₹ 33 040

LIMITED AVAILABILITY

XS	51LGJM371BKB	XL	51LGJM371BKF
S	51LGJM371BKC	XXL	51LGJM371BKG
M	51LGJM371BKD	XXXL	51LGJM371BKH
L	51LGJM371BKE		

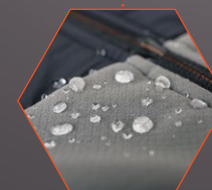
Reflective prints feature glass bead technology.



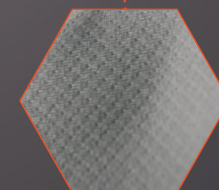
Reverse coil, bi-colour YKK zip.



Quick burst zips for easy sleeve removal.



Durable Water Repellent (DWR®) coating.



Constructed from ultra-resistant Schoeller® stretch fabric.



Concealed pocket for sleeve stowage.



PrimaLoft® Black Eco recycled insulation.

WOMEN'S RODINIA HYBRID JACKET

Black - ₹ 37 759

8	51LGJW377BKI	14	51LGJW377BKL
10	51LGJW377BKJ	16	51LGJW377BKM
12	51LGJW377BKK	18	51LGJW377BKN



MEN'S & WOMEN'S JACKET FEATURES

- Constructed from abrasion-proof Schoeller® stretch fabric.
- Durable Water Repellent (DWR®) coating allows water to bead and run off for faster drying times.
- PrimaLoft® Black Eco recycled insulation for eco-friendly, lightweight and compressible warmth.
- Ergonomic YKK zip with reverse coil construction.
- Reflective prints feature glass bead technology for enhanced visibility.
- Quick burst zip technology transforms jacket into gilet.
- Concealed pocket for stowing removable sleeves.





TEPHRA GORE-TEX SHELL PARKA

Endure the extremes. The tech-packed, triple-layer parka is the ultimate protective garment. Featuring a precision-engineered construction that provides superlative wind and waterproof performance.



MEN'S TEPHRA GORE-TEX
SHELL PARKA

MEN'S TEPHRA GORE-TEX SHELL PARKA

Black - ₹ 39 200

LIMITED AVAILABILITY

XS	51LGJM368BKB	XL	51LGJM368BKF
S	51LGJM368BKC	XXL	51LGJM368BKG
M	51LGJM368BKD	XXXL	51LGJM368BKH
L	51LGJM368BKE		



MEN'S & WOMEN'S JACKET FEATURES

- 3-layer GORE-TEX laminate provides superior weatherproofing and breathability.
- Durable Water Repellent (DWR®) coating.
- Water-resistant YKK zips with AquaGuard® (Coil).
- Embedded COHÆSIVE™ cord locks for easy, one-handed adjustment.
- Cargo pockets feature water deflecting top closures.
- Reflective prints feature glass bead technology for enhanced visibility.
- Two-way adjustable hood.



WOMEN'S TEPHRA GORE-TEX
SHELL PARKA

WOMEN'S TEPHRA GORE-TEX SHELL PARKA

Black - ₹ 44 801

LIMITED AVAILABILITY

8	51LGJW374BKI	14	51LGJW374BKL
10	51LGJW374BKJ	16	51LGJW374BKM
12	51LGJW374BKK	18	51LGJW374BKN



WELDED THERMO JACKET

Insulation meets innovation in this ultrasonic Welded Thermo Jacket. Constructed with PrimaLoft® insulation fused with Aerogel for the performance of natural down. Seamless design. Unsurpassed comfort. And peerless durability in all terrains.



MEN'S WELDED
THERMO JACKET

MEN'S WELDED THERMO JACKET Black - ₹ 39 200

XS	51LGJM370BKB	XL	51LGJM370BKF
S	51LGJM370BKC	XXL	51LGJM370BKJ
M	51LGJM370BKD	XXXL	51LGJM370BKH
L	51LGJM370BKE		



MEN'S & WOMEN'S JACKET FEATURES

- 3-layer waterproof shell fabric with polyester face.
- Equipped with a RECCO® integrated reflective antenna that helps rescue teams locate you in difficult terrain.
- PrimaLoft® Silver insulation provides warmth of natural down without the weight.
- PrimaLoft® Aerogel-lined pocket keeps mobile phones charged for longer.
- Embedded COHÆSIVE™ cord locks for easy, one-handed adjustment.
- Reflective prints feature glass bead technology for enhanced visibility.



WOMEN'S WELDED
THERMO JACKET

WOMEN'S WELDED THERMO JACKET Black - ₹ 39 200

LIMITED AVAILABILITY

8	51LGJW376BKI	14	51LGJW376BKL
10	51LGJW376BKJ	16	51LGJW376BKM
12	51LGJW376BKK	18	51LGJW376BKN



LITE GORE-TEX PACKABLE JACKET

Feather-light. Fully stowable. This jacket is made from highly breathable GORE-TEX fabric. An articulated construction with fully-taped seams, it ensures superior waterproof protection. A form-fitting jacket for high-intensity activities.



MEN'S LITE GORE-TEX
PACKABLE JACKET

MEN'S LITE GORE-TEX PACKABLE JACKET Black - ₹ 25 200

XS	51LGJM369BKB	XL	51LGJM369BKF
S	51LGJM369BKC	XXL	51LGJM369BKG
M	51LGJM369BKD	XXXL	51LGJM369BKH
L	51LGJM369BKE		



MEN'S & WOMEN'S JACKET FEATURES

- Constructed from ultra-breathable GORE-TEX Active fabric.
- Fully waterproof with taped seams.
- Packs away into pocket for easy attachment to belt loops and bags.
- Reflective prints feature glass bead technology for enhanced visibility.
- Durable Water Repellent (DWR®) coating.
- Embedded COHÆSIVE™ cord lock for easy adjustment.



WOMEN'S LITE GORE-TEX
PACKABLE JACKET

WOMEN'S LITE GORE-TEX PACKABLE JACKET Black - ₹ 28 800

8	51LGJW375BKJ	14	51LGJW375BKL
10	51LGJW375BKJ	16	51LGJW375BKM
12	51LGJW375BKK	18	51LGJW375BKN



REVERSIBLE BASE LAYER

A Reversible Base Layer that adapts to the seasons. Made with thermal regulating merino fabric on one side and breathable polyester fabric on the other. Featuring flatlocked seams with black reflective prints and glass bead technology for enhanced low-light visibility.



MEN'S REVERSIBLE
BASE LAYER

MEN'S REVERSIBLE BASE LAYER Grey - ₹ 8 400

XS	51LGT373GYB	XL	51LGT373GYF
S	51LGT373GYC	XXL	51LGT373GYG
M	51LGT373GYD	XXXL	51LGT373GYH
L	51LGT373GYE		



MEN'S & WOMEN'S BASE LAYER FEATURES

- Merino fabric provides thermal regulation, wicking and anti-odour properties.
- Reverse side features polyester fabric that's breathable, wicking and fast-drying.
- UPF 30 sun protection.
- Reflective prints feature glass bead technology for enhanced visibility.
- Water-resistant pocket for phone.



WOMEN'S REVERSIBLE
BASE LAYER

WOMEN'S REVERSIBLE BASE LAYER Black - ₹ 9 600

8	51LGTW379BKI	14	51LGTW379BKL
10	51LGTW379BKJ	16	51LGTW379BKM
12	51LGTW379BKK	18	51LGTW379BKN



ABOVE AND BEYOND BEANIE

Simple. Subtle. Essential. A double-layered beanie that offers twice the protection in the great outdoors. Designed with a reflective label and turned-up cuff. Headwear that prepares you for anything.

FEATURES

- Double layered for warmth.
- Comfortable ribbed construction.
- Reflective branded label.

Black – ₹ 2 360

51LHCH458BKA

ABOVE AND BEYOND BLIZZARD COAT

PROTECTS

The ultimate defence for dogs. This technical outer layer protects dogs against the cold and the wet. Features weatherproof outer made from black hexagon nylon. With 4 layers for superior warmth, and 4 reflective points for low-light visibility. Designed for easy adjustment and a precision fit.

FEATURES

- Tail opening.
- Leather strap.
- Reflective stitching.

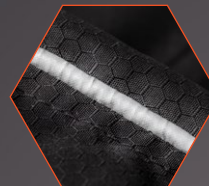
Black and Orange

AVAILABLE JANUARY 2021

S	51LGPT938MXC - ₹ 5 120
M	51LGPT938MXD - ₹ 5 760
L	51LGPT938MXE - ₹ 6 400
XL	51LGPT938MXF - ₹ 7 040



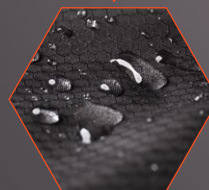
Reflective piping for low-light visibility.



3 point adjustment for perfect fit.



Silicone moulded badge.



Waterproof nano-treated outer.



Micro-fleece base layer for superior warmth.



Underbody protection.



ABOVE AND BEYOND DOG HARNESS

Next generation harness. Designed for comfort and made with hard-wearing components. Featuring fully-padded body with breathable mesh lining. Includes sports buckle, padded traffic handle and rust-resistant nickel D-ring.

FEATURES

- High-resistance hexagon jacquard nylon.
- Fully adjustable for a secure fit.
- Removable chest pad for ease of movement.
- Reflective print and piping.
- Attachment loops for accessories.

Black and Orange
AVAILABLE JANUARY 2021

S 51LGP937MXC - ₹ 3 840
M 51LGP937MXD - ₹ 4 480



ABOVE AND BEYOND
FUNCTIONAL ACTIVITY BELT

SECURES

Rugged, reliable and remarkably strong.

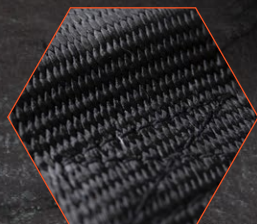
Featuring an ultra-robust webbing construction with a tensile strength of 6000kg. Fitted with a hard-wearing HYPALON™ stopper. And secured with the world's safest and strongest ANSI COBRA® buckle. A belt that goes beyond the call of duty when you have to.

Black - ₹ 9 520

S/M 51LGGF382BK4
L/XL 51LGGF382BK6



Features an ANSI COBRA® buckle: the world's safest and strongest buckle.



Ultra-robust webbing construction.

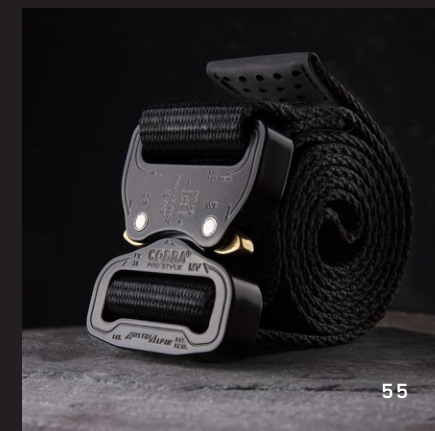


HYPALON™ stopper for heavy-duty outdoor use.

WIDTH
38mm

WEBBING TENSILE STRENGTH
6000kg

SECURED BY AN
ANSI COBRA®
BUCKLE



MIROVIA SEAM SEALED BACKPACK

HAULS

The go-anywhere, take-anything backpack. Constructed from 500D PVC material chosen for its uncompromising quality and significant strength. Designed with a large roll-top and heat-sealed seams to keep moisture out. Complete with HYPALON™ lashing points and a release valve for compact packing.

FEATURES

- 500D PVC material and heat-sealed seams defend contents against water damage.
- 25 litre main compartment with computer pocket for safer storage.
- Exterior features HYPALON™ lashing points.
- Finished with reflective print for superior visibility.
- Hard-wearing valve releases pressure for compact packing.

Black - ₹ 13 570

51LGLU385BKA



Features robust 500D
PVC material and
heat-sealed seams.

25 litre main
compartment with
computer pocket.

Stitched HYPALON™
lashing points.

Integrated release
valve aids compact
packing.

ABOVE AND BEYOND FLASK

SUSTAINS

This robust, double-walled steel flask keeps liquids cold for up to 24 hours and hot for up to 15 hours. Featuring an easy-grip design that can be held with gloves. Durable and rugged with a nylon cord for easy attachment.

Black - ₹ 4 130

51LGGF393BKA

KEEPS LIQUIDS COLD FOR UP TO

24hrs

KEEPS LIQUIDS HOT FOR UP TO

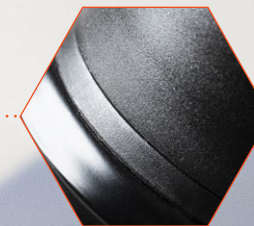
15hrs

CAPACITY

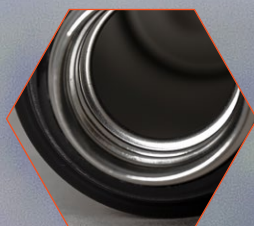
500ml



Features easy-pour lid with removable drinking cup.



Waterproof seals for secure transportation of liquids.



Double-walled steel flask means liquid maintains its temperature for longer.



Ergonomic barrel designed for superior grip.



Nylon cord for easy attachment.



LEROVA TRAVEL WALLET

This durable travel wallet is built to safeguard your essentials from the elements. 23cm x 3cm x 12cm.

FEATURES

- Rugged, water-resistant construction.
- Protects your items from water damage.
- Attaches to bags and belt loops with hard-wearing carabiner.

Black - ₹ 4 720

51LGLU383BKA



ABOVE AND BEYOND WATER BOTTLE

A technical water bottle with easy-grip exterior. Constructed from Borosilicate glass that is resistant to thermal shock, it can be easily attached to travel bags. Super durable and expedition friendly.

FEATURES

- Silicone sleeve.
- Liquid volume marker.
- Watertight lid.
- Anti-slip base.

Black - ₹ 3 540

51LGGF392BKA



ABOVE AND BEYOND CAP

Enhanced breathability and low-light visibility. This quick-drying cap is designed to keep you comfortable, and put your performance first come rain or shine.

FEATURES

- UPF 40 sun protection.
- Open mesh side panels.
- 3M reflective accents and branding.
- Quick-dry fabrics and ventilation.
- Reflective print to the rear.

Black - ₹ 3 540

51LGCH380BKA



ABOVE AND BEYOND MICROFIBRE ACTIVE TOWEL

Pack light. Stay dry. This branded microfibre active towel is made from a high-wicking polyester blend that's light, fast-drying and easy to store.

FEATURES

- High-wicking polyester blend.
- Branded print to one side and orange trim.
- Easy storage in a drawstring pouch.
- Unfolded Size: 110cm x 65cm.
- Folded Size: 16cm x 20cm.

Black - ₹ 3 360

51LGGF386BKA



ABOVE AND BEYOND MULTI TECH GLOVES

Dynamic movement. Resilient protection. These performance gloves are lightweight, versatile and can be easily adjusted for a tailored fit. Tested extensively by Land Rover Experience for a multitude of outdoor uses.

FEATURES

- Raised silicone print for enhanced grip.
- Hard-wearing construction.
- Conductive finger-pads for use on any touchscreen device.
- Breathable, anatomical comfort.
- Velcro adjuster on neoprene cuffs.

Black - ₹ 6 160

S/M 51LGVM381BK4
L/XL 51LGVM381BK6



Conductive finger-pads work on touchscreens.



ABOVE AND BEYOND MULTI TOOL

ADAPTS

Does everything. Goes anywhere. This handy tool has been designed for hard-wearing use both on and off road. Features 9 individual tools made from reinforced stainless steel.*

FEATURES

- Spring-action pliers.
- Knife with safety lock.
- Bottle opener.
- Serrated blade.
- Phillips screwdriver.
- Can opener.

Orange – ₹ 4 720

51LGGF388BKA



ABOVE AND BEYOND POCKET MULTI TOOL

Pocket-sized and packed with tools. This all-in-one pocket multi tool is made from stainless steel and reinforced with a black aluminium cover. Small, sleek, but seriously useful.*

FEATURES

- Pliers.
- Bottle opener built into cutter.
- Carabiner attaches to bags.
- Phillips screwdriver.
- Knife with safety lock.

Black – ₹ 3 540

51LGGF391BKA



*Minimum age limit applies.

ABOVE AND BEYOND FOLDING SHOVEL

A tool to travel with. The all-terrain shovel folds down into a portable size. Its sturdy construction and serrated edge make light work of the toughest tasks. Finished with laser engraved branding.

FEATURES

- Reinforced folding shovel designed for easy storage.
- Easy-grip.
- Dual edged for multi-purpose use.
- Rigid handle for leverage and durability.

Black – ₹ 3 540

51LGGF387BKA



LAND ROVER X ELLIOT BROWN
HOLTON PROFESSIONAL WATCH

ENDURES

Designed by experts. Used by professionals. This exclusive timepiece, created in collaboration with premium English watchmaker Elliot Brown, offers precision timekeeping and unrelenting durability. Featuring scratch-resistant sapphire crystal, unidirectional bezel and luminous dial and hands. With two straps for all-terrain versatility. Shock resistant. Triple-sealed for water protection. And capable of prolonged exposure to the elements. It's a watch that knows no limits.

FEATURES

- 43mm case.
- Tested in water at 200m.
- Screw-down triple-sealed crown.
- Rubber strap resistant to temperature extremes.
- Super-LumiNova luminous hands and dial markings.

Black - ₹ 63 871

51LHWM992BKA



High grip uni-directional bezel.



Ultra shock-resistant casing.



Technical webbing strap.

TESTED IN WATER AT

200m

SHOCK-RESISTANT TO

5,000G

CASE

43mm



Fitted soft rubber strap.



CLOTHING FEATURES GUIDE



RODINIA HYBRID JACKET

PRIMALOFT.

DWR

ABRASION
RESISTANCE

PRIMALOFT.
AEROGEL

YKK
QUICKBURST

MODULAR
SYSTEMS



SCORIA TECH MID LAYER

DWR

GLASSBEAD
TECHNOLOGY



TEPHRA GORE-TEX SHELL PARKA

GORE-TEX®

DWR

GLASSBEAD
TECHNOLOGY

Cohæsive™
EMBEDDED COMPONENTS

THREE LAYER SHELL

TAPED SEAMS



WELDED THERMO JACKET

Cohæsive™
EMBEDDED COMPONENTS

DWR

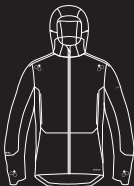
GLASSBEAD
TECHNOLOGY

ULTRASONIC
WELDING

PRIMALOFT.
AEROGEL

PRIMALOFT.
CROSS CORE
TECHNOLOGY

RECCO®



LITE GORE-TEX PACKABLE JACKET

GORE-TEX®

DWR

GLASSBEAD
TECHNOLOGY

Cohæsive™
EMBEDDED COMPONENTS

PACKABLE

TAPED SEAMS



REVERSIBLE BASE LAYER

Reversible

HYBRID

30
UPP THIRTY

GLASSBEAD
TECHNOLOGY

CLOTHING SIZE GUIDE

UK MEN'S	CHEST (CM)
XS	79 - 84
S	86 - 91.5
M	94 - 99
L	101.5 - 106
XL	109 - 114
XXL	117 - 122
XXXL	125 - 130

UK WOMEN'S	BUST (CM)
8	78.5 - 81
10	82 - 86
12	87 - 91.5
14	92 - 96.5
16	97 - 101.5
18	102 - 106.5

Product availability and pricing are subject to change. All copy and images remain the copyright of Jaguar Land Rover. Correct at time of publication; subject to availability and market; Jaguar Land Rover reserve the right to remove or change specification of items in the range at any time.



ABOVE & BEYOND

Find us at:

findmeasuv.in/lrc/shop

Or visit your local retailer

Registered Office:

Abbey Road, Whitley, Coventry CV3 4LF

Registered in England No: 1672070.

VAT Registration No: GB927153228.